

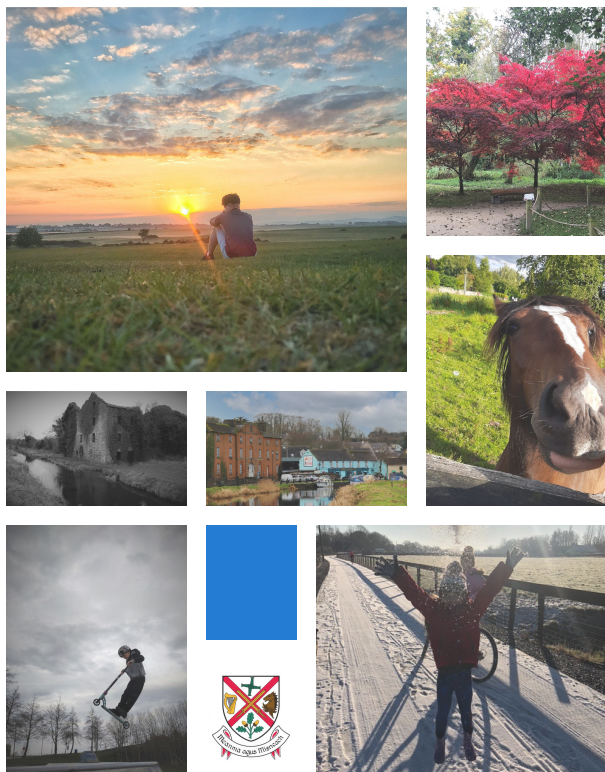


## **Variation No.1**

## **Amendments to Volume 1**

# **Kildare County Development Plan 2023-2029**





**Planning Department  
Kildare County Council**



Kildare County Council resolved to adopt Variation (No.1): Kilcullen Settlement Plan of the Kildare County Development Plan 2023-2029 at its special meeting on the 31<sup>st</sup> March 2025.

Variation No.1 of the Kildare County Development Plan 2023-2029 is effective as of 31<sup>st</sup> March 2025.

This document outlines amendments to the Written Statement in particular Chapters 2 'Core Strategy & Settlement Strategy' and 'Chapter 5 Sustainable Mobility & Transport' of Volume 1 of the Kildare County Development Plan 2023-2029. This document and subsequent amendments outlined should be read in conjunction with same.

## **Chapter 2 Core Strategy & Settlement Strategy**

Amendment No. 1		
Chapter	Section	Page(s)
Chapter 2: Core Strategy & Settlement Strategy	Objectives – Core Strategy and Settlement Strategy	36

### **Amendment:**

Amend objective CS 09 as follows;

~~**CS 09** Review and prepare on an ongoing basis a portfolio of Local Area Plans (LAPs) for the mandatory LAP settlements (and environs, where appropriate) of Naas, Maynooth, Newbridge, Leixlip, Kildare, Athy, Celbridge, Kilcock, Monasterevin, Sallins, Clane and Kilcullen in accordance with the objectives of the County Development Plan and all relevant Section 28 Ministerial Guidelines.~~

**CS 09** Ensure that up-to-date settlement plans (specific to be determined through the County Development Plan review/variation) are in place for those County Kildare settlements in the Settlement Hierarchy in accordance with the obligations of the planning legislation and in accordance with relevant Section 28 *Ministerial Guidelines*, regional planning objectives, and the County Development Plan.

## **Chapter 5 Sustainable Mobility & Transport**

Amendment No. 2		
Chapter	Section	Page(s)
Chapter 5: Sustainable Mobility & Transport	5.3 Overarching Goals, Policies and Objectives	148

### **Amendment**

- Amend objective TM A2 as follows: (Existing footnotes No.5 and No.6 to be removed and updated accordingly.)

~~**TM A2** Prepare, implement and review (where appropriate) Local Transport Plans (LTPs)/ Area Based Transport Assessments (ABTAs)<sup>5</sup> for each of the statutory LAP settlements<sup>6</sup> in County Kildare in consultation with TII and the NTA, based on the following ABTA guidelines published by the TII/NTA – ABTA ‘How to Guide’, Pilot Methodology (September, 2021) and the Area Based Transport Assessment Advice Note (December, 2018). LTPs/ABTAs will include the transport priorities for each settlement in terms of public transport infrastructure and services; cycle investment; improvements to the pedestrian environment; parking measures and road enhancements. LTPs/ABTAs must be developed to provide a framework to cater for the movement of pedestrians, cyclists, public transport services and private vehicles which are aligned with the hierarchy of users and modal shift targets set out in this Plan. The Accessibility and Movement Objectives of Local Area Plans should be based on relevant LTPs/ABTAs~~

**TM A2** Prepare, implement and review (where appropriate) transport and mobility strategies for each settlement commensurate to their scale and complexity to provide an evidence-base for objectives and actions included within settlement plans. Local Transport Plans (LTPs)/ Area Based Transport Assessments (ABTAs) shall be prepared for the Key Towns and Self-Sustaining Growth Town settlements in County Kildare in consultation with TII and the NTA. Smaller settlements will benefit from the preparation of a Transport and Mobility Strategy to support their settlement plans and objectives / actions. Transport and mobility strategies will be developed to provide a framework for the movement of pedestrians, cyclists, public transport services and private vehicles which are aligned with the hierarchy of users and modal shift targets set out in this Plan. Transport and mobility strategies will include measures for pedestrian, cycle, public transport infrastructure and services, road / street corridor enhancement, demand management and freight management. LTPs / ABTAs will be prepared in accordance with appropriate national guidelines, such as the ABTA ‘How to Guide’, Pilot Methodology (September, 2021) and the Area Based Transport Assessment Advice Note (December, 2018) published by NTA / TII.